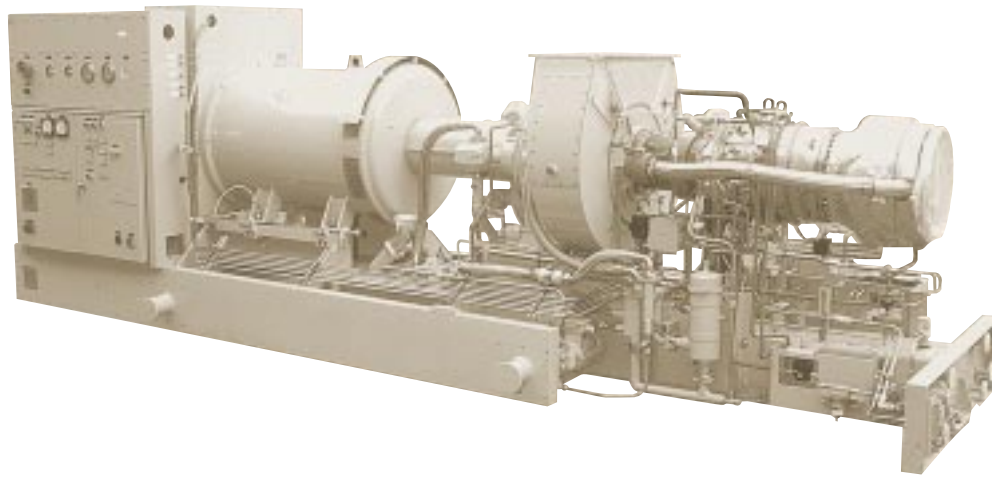


Industrial/Utility Grade



Features

- Industrial Gas Turbine Package
- Compact, Integrated Package Providing Ease of Installation
- Factory Tested
- Multiple Fuel Capability
- Onskid Microprocessor-Control with Auto Sync Capability

Package Arrangement

Gas Turbine

- Saturn® 20 Industrial, Single-Shaft
- Axial Compressor – 8 Stages
- Annular Combustion Chamber
 - 12 Fuel Injectors
- Coatings
 - Compressor: Inorganic Aluminum
 - Turbine and Nozzle Blades: Precious Metal Diffusion Aluminide
- Velocity Vibration Transducers

Main Reduction Drive

- Epicyclic
 - 1800 or 1500 rpm
 - Acceleration Vibration Transducers

Generator

- Salient Pole, 3 Phase, 6 Wire, Wye Connected, Synchronous with Brushless Exciter
- Open Drip-Proof Construction
- Sleeve Bearings
- Velocity Vibration Transducers
- Solid-State Voltage Regulation with Permanent Magnet Generator
- NEMA Class H Insulation with H Rise
- Continuous Duty Rating

Package

- Steel Base Frame with Drip Pans
- Direct-Drive AC or Pneumatic Start System
- Natural Gas Fuel System
- Control System
 - Microprocessor-Based PLC
 - Generator Control
 - Vibration and Temperature Monitoring
 - Auto Synchronizing
- Integrated Lube Oil System
 - Turbine-Driven Lube Pump
 - AC Pre/Post Lube Pump
 - Air/Oil Cooler
 - Integral Lube Oil Tank
 - Lube Oil Filter
- Documentation
 - Drawings
 - Quality Control Data Book
 - Inspection and Test Plan
 - Test Reports
 - O&M Manuals
- Factory Testing of Turbine and Package
- Weatherproof Acoustic Enclosure

Optional Equipment/Services

- Generator Options:
 - Standby Duty Rating
 - Standard Voltages: 380, 415, 3300 50 Hz; 240, 480 2400, 4160 60 Hz

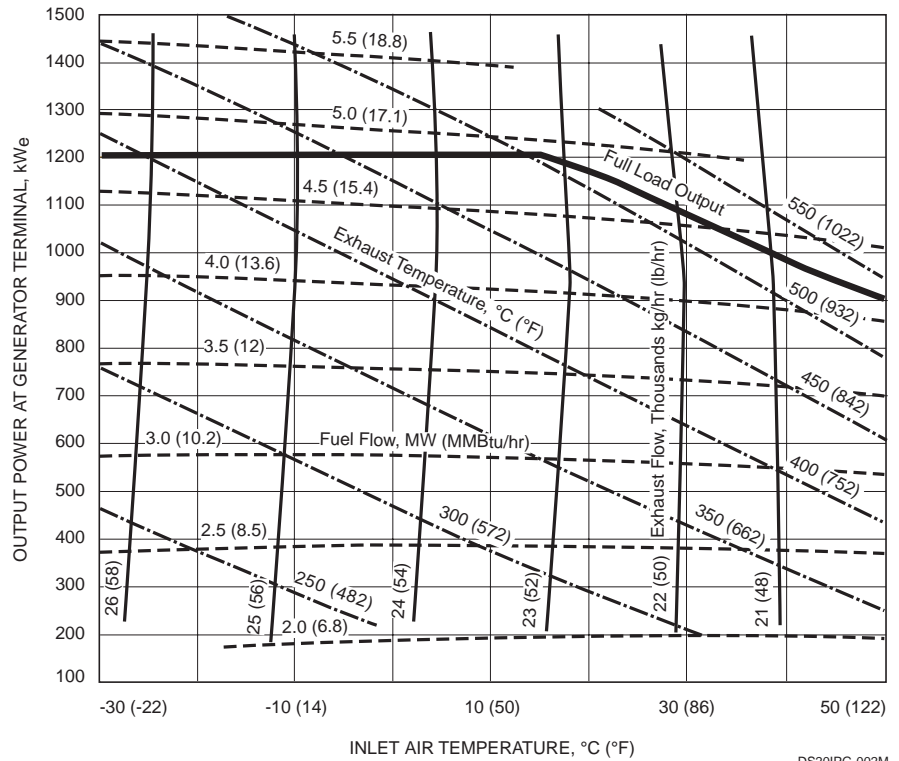
- Fuel Systems
 - Liquid
 - Dual (Gas/Liquid)
 - Water Injection for NOx Control
 - Alternate Fuels (such as naphtha, propane, low Btu)
- Lube Oil System
 - Water/Oil Lube Cooler
 - Electrostatic Demister
 - Lube Oil Tank Heater
- Control System
 - Remote Display/Control Terminal
 - Heat Recovery Application Interface
 - Serial Link Supervisory Interface
 - KW Control
 - KVAR/Power Factor Control
- Accessory Equipment
 - Turbine Cleaning System: On-Crank and On-line
 - Package Lifting Kit
- Ancillary Equipment: Various Air Inlet and Exhaust Systems
 - Inlet and Exhaust Silencers
 - Self-Cleaning or Prefilter/Barrier Air Inlet Filter
 - Inlet Evaporative Cooler
 - Inlet Chiller Coils
 - Ancillary Support Frame

Nominal Performance*

Output Power, kWe ISO: 15°C (59°F), sea level	1210
Heat Rate, kJ/kWe-hr (Btu/kWe-hr)	14 741 (13,972)
Exhaust Flow, kg/hr (lb/hr)	23 220 (51,240)
Exhaust Temperature, °C (°F)	516 (960)

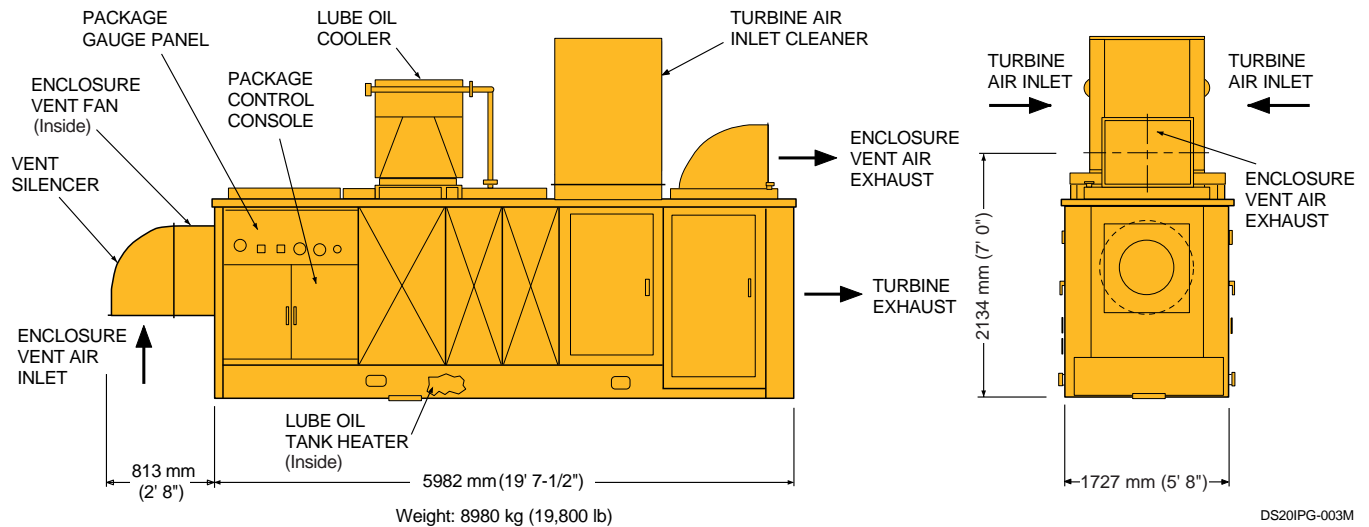
* No inlet or exhaust losses
Relative humidity 60%
Natural gas fuel with
LHV = 31.5 to 43.3 MJ/nm³
(800 to 1100 Btu/scf)

Available Performance



DS20PG-002M

Typical Package Configuration



DS20PG-003M

Solar Turbines Incorporated
P.O. Box 85376
San Diego, CA 92186-5376

Caterpillar is a trademark of Caterpillar Inc.
Solar and Saturn are trademarks of Solar Turbines Incorporated.
Specifications subject to change without notice. Printed in U.S.A.
©1998 Solar Turbines Incorporated. All rights reserved.
DS20PG/1198/5M

FOR MORE INFORMATION

Telephone: (+1) 619-544-5352
Telefax: (+1) 619-544-2633
Telex: 695045
Internet: www.solarturbines.com

